



# MTAC Orange Coast Cities Branch

Newsletter

September 2008



*Welcome back to our new season!*

## News – September Branch Meeting at Mission Viejo City Hall

### Table of Contents



Calendar	1
Angela's Aria	2
Theme Festival	3-4
Programs	5
Certificate of Merit	6
Announcements/ Events/Members	7
Advertisements	8
Community Recital Application	9-11
Showcase Recital Application	12

► **Sep 17 (Wed) 9:30AM**

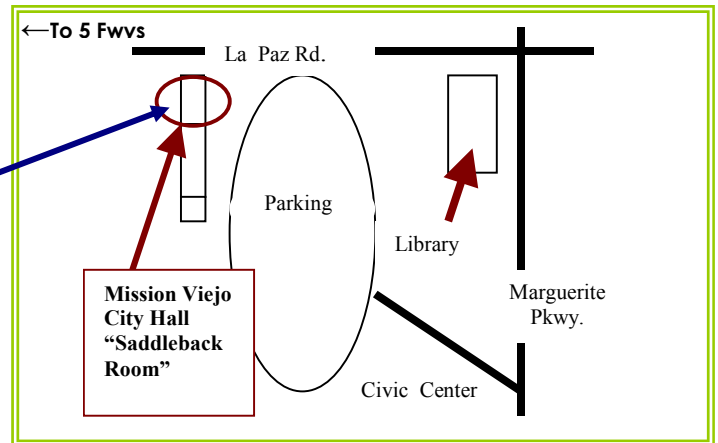
### Branch Meeting Mission Viejo City Hall "Saddleback Room"

200 Civic Center,  
Mission Viejo CA 92691  
(949) 830-7100

**See you all**

**in Mission Viejo!**

(See the following page  
for the detail.)



Please note that this specific meeting is **NOT** at **Laguna Hills Community Center!**  
It starts earlier, too, at 9:30AM. Branch meetings will go back to Laguna Hills CC in October.

## Calendar – September/October 2008

### SEPTEMBER

- **Sep. 15 (Mon) CM**  
Registration opens on-line at [www.mtac.org](http://www.mtac.org) CM registration page
- **Sep. 15 (Mon) Deadline**  
-Southern California Junior Bach Festival Concerto Audition - [www.scjbf.org](http://www.scjbf.org)
- **Sep. 17 (Wed) 9:30am**  
**Branch Meeting** (see p. 3)  
**Mission Viejo City Hall**
- **Sep. 24 (Wed) 9:00 am**  
**CM Information Meeting** for teachers with **Judy Jenkins**,  
**Saddleback Room, Mission Viejo City Hall**

### OCTOBER

- **Oct 4 (Sat) Deadline** for Oct. 19 **Community Service Recital**: Mail form & fees to **Jennifer King**.
- **Oct 8 (Wed) 10am**  
**Branch Meeting, LHCC**  
**Dr. Scott McBride Smith**
- **Oct 8 (Wed) Deadline**  
Due for fees - online sign-up for **Theme Festival** entries.  
Mail checks to **Chris Jones**.
- ♪ **Oct 12 (Sun) 1pm**  
**Adult Students Workshop**,  
**Saddleback Room**,  
**Mission Viejo City Hall**
- **Oct 15 (Fri) Deadline** - **Showcase Recital**: Mail form & checks to **Angela Leu**.
- ♪ **Oct 19 (Sun) 3pm**  
**Community Service Recital**,  
**Freedom Village**
- **Oct 24 (Fri) Deadline** – **Saddleback College Concerto Competition** - to **Pam Worcester**
- ♪ **Oct 26 (Sun) 2pm**  
**Showcase Recital**,  
**Saddleback Room**,  
**Mission Viejo City Hall**



### NEW RULES

#### OCC Branch Festivals/Recitals

In the June 2008 Newsletter, *some new rules* were announced for OCC Branch Recitals.

#### New

- number of entries per teacher
- New duration per piece

Please review them one more time before applying your students to any branch events at:

<http://www.mtacocc.org/Newsletter/0806.pdf>

### Welcome back!

We will have our September meeting at the **Mission Viejo City Hall, Saddleback Room** on Wednesday (9/17/08) at **9:30 A.M.** It is going to be a very informative meeting that you do not want to miss.

Our own Bob Casper, and Stephen Mergener, our new web site designer, will introduce **the new branch web site** and **the on-line festival registration** process.

**Our new yearbook /directory** will be available at the meeting for you. You may also visit the branch website to keep yourself informed with all branch activities.

Thank you to Bobbette Cameron, Katy Dougherty, Judy Jenkins, Nilou Sarraf, and Valerie Redlick for attending the business meeting as our branch delegates at the MTAC Convention in June.

Thank you to Keiko Ikeda that our branch newsletters have received many convention awards.

We also received a cash award for being the large branch with most attendants. It sure was wonderful to see so many of you at the convention and congratulations to those of you with students performing and receiving awards at the convention.

I would like to thank Marina Sakach for serving as our Vice President in charge of Membership and the wonderful job that she has done for us. Esther Park has taken over Marina's baton and is the new VP Membership.

Our CM Strings Chair, Gloria Liu Traulle, has volunteered to bring the Junior Chamber Ensemble Recital back in January 2009.

Once again, many thanks to **OUR volunteers** who have made so many

wonderful programs available to our members. Our volunteer names are listed in the yearbook. Please feel free to give them your thanks and encouraging words. I look forward to enjoying this year's branch programs and seeing you at our upcoming meeting.

Angela Leu



### Branch Meeting

Sep 17 (Wed) 9:30AM

**Mission Viejo City Hall**  
"Saddleback Room"

"What the **New Branch Website** Can Do for You and How You Can Do It" with

**Bob Casper** (Branch Webmaster) / **Stephen Mergener** (Mergener Enterprises Inc. - Web design)

▣ **Not at the Laguna Hills Community Center!**

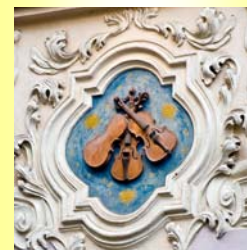
▣ **You can pick up "Yearbook 2008-2009".**

## PROGRAMS

### Branch Theme Festival

*“Duets, Duos, and Beyond”*

**Classical, Romantic, and Late Romantic/Impressionist periods**



**Saturday, November 8,  
2008  
Saddleback College**

Festival Chair:  
**Christine Jones**  
**(949) 859-7463**  
[pianousa@yahoo.com](mailto:pianousa@yahoo.com)

Co-Chair:  
**Angela Leu**  
**(949) 697-2888**  
[leulu88@yahoo.com](mailto:leulu88@yahoo.com)

Festival Administrator:  
**Pam Worcester**  
**(949) 581-1467**  
[pocky@cox.net](mailto:pocky@cox.net)

This festival will feature **ensembles** of the **same instrument** or **same discipline** (i.e. **violin/viola, voice-soprano/alto**), **playing music of the Classical, Romantic, and Late Romantic/Impressionist periods.**

It will NOT include combinations of different instruments, nor will it feature Baroque or Contemporary pieces. And only two pianos will be available at the college, so beware of the “monster concert” concept. No piano concerti, please. Get your teams together this summer and explore some wonderful literature!

## Theme Festival Application Procedure

### OCC WEBSITE REGISTRATION

Fees to be sent by

**Deadline - Oct. 8  
(Wed)**

It is branch website registration: Our new branch website [www.mtacocc.org](http://www.mtacocc.org) will be ready for Theme Festival Registration page soon. Please type in all the required information correctly, and make a check (total sum of your entries) payable to MTAC OCC Branch. Mail fees to: Christine Jones (27444 Sereno, Mission Viejo, CA92691)

More details of the application procedure will be announced at the **September 17<sup>th</sup> Branch Meeting**, also as an **Addendum issue** of branch newsletter in middle September.

### Q & A

#Are we limiting entries up to eight groups per teacher here, too? Or eight students (four or less teams)?  
-Eight teams per teacher is acceptable.

#No Chamber groups?  
-No chamber groups for this festival. Only with groups of same instrument/discipline.

#Are teams to be categorized based on the ages like other festivals for evaluation?  
-The age category will be determined by the age of the oldest student in the group.

#Can a sibling of one high school student and one elementary school be paired as a duet team?  
-Yes, students of different ages can play together. Just the preceding rule will apply for awards.

#Can they play more than one movement, i.e. Suites, Variations?  
- The same rules from other festivals apply as always with playing multiple movements. Two movements can be performed if it doesn't exceed 5 minutes. (Each movement being under 2 minutes)

#Can they play a piece that was composed by a composer, but someone else transcribed it for duet?  
- Original compositions by a single composer should be selected primarily. No simplified duet versions of pieces are allowed for the festival. All the pieces must have been officially published and available to purchase. See the list of acceptable transcriptions in the following page.

# Approved Selections/Transcriptions



## HOW TO CHECK IF THE PIECES ARE ACCEPTABLE

This festival will feature **ensembles of the same instrument or same discipline** (i.e. violin/viola, voice-soprano/alto), playing music of the **Classical, Romantic, and Post-Romantic/Impressionist** periods.

No Baroque.  
No Contemporary pieces!  
No simplified versions!

Please refer to the **CM Syllabus**

Section 5 shows Reference, Composers dates and periods for a list of acceptable composers for these periods including composers of the Impressionist/Early 20th Century (p. 100).

If you have questions, please contact

Festival Chair:  
**Christine Jones**  
(949) 859-7463  
[pianousa@yahoo.com](mailto:pianousa@yahoo.com)  
or the Festival Administrator,  
**Pam Worcester**  
(949) 581-1467  
[pocky@cox.net](mailto:pocky@cox.net).

As always, transcriptions **by the original composer** are acceptable. (See below for examples.) Any simplified version is not allowed.

- Brahms - *Waltzes, Op. 39*  
- arranged by the composer (Schirmer)
- Debussy - *Prelude a L'apres Midi d'un Faune*  
- arranged by the composer (Jobert)
- Ravel - *La Mere L'oye (Mother Goose Suite)*  
- transcribed by the composer (Durand et Cie)
- Ravel - *Rhapsodie Espagnol*  
- arranged by the composer (Durand SA)
- Saint-Saëns - *Danse Macabre, Op. 40*  
- arranged by the composer (Durand et Cie)

### ► Transcriptions/arrangements by other composers

Only the following transcriptions will be allowed for the 2008 Theme Festival:

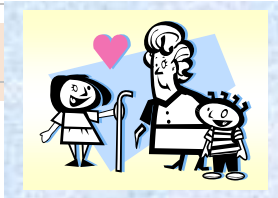
**Weekley and Arganbright** transcriptions/arrangements are acceptable if they are not simplified.

Examples:

- Gurlitt 6 Pieces for 6 Hands*  
- transcribed by Weekley & Arganbright
- Four Joplin Waltzes* (Weekley & Arganbright)

- Debussy - *Le Petite Suite for Two Pianos*  
-transcribed by **Henri Busser**  
(Durand et Cie)
- Debussy - *Nocturnes* - transcribed by **Maurice Ravel** (Jobert)
- Schumann - *6 Etudes in Canon Form*  
- arranged by **Claude Debussy**  
(Schirmer & others)
- Saint-Saëns - *Introduction et Rondo Capriccioso, Op. 28*  
- transcribed by **Debussy** (Durand; IMC)

# Community Service Recitals



Community Service Recitals Begin **Sunday, October 19, 2008**

The first **Community Service Recital** this year will take place on **Sunday, October 19, 2008, 3pm** at **Freedom Village Retirement Community** on El Toro Road in Lake Forest.

These recitals will alternate between **Freedom Village** and **Aegis Assisted Living of Laguna Niguel**. All recitals will take place on Sundays at 3:00 p.m. There will be four (4) recitals throughout the year, currently planned for **October 19** at **Freedom**, **December 14** at **Aegis**, **February 22** at **Freedom**, and **April 19** at **Aegis**.

Last minute changes will be noted in future newsletters. Both venues offer beautiful grand pianos, and a pleasant, welcoming atmosphere. Application forms, deadlines and Maps to these centers are available in **this newsletter, page 9-11**, and will be on the website at: [www.mtacocc.org](http://www.mtacocc.org) soon.



## Showcase Recitals

**October 26,  
Sunday, 2pm**  
Saddleback Room,  
Mission Viejo City Hall  
**DEADLINE: Thurs. Oct. 15**

Showcase Recitals are open for all instruments and Voice. It is open to beginners through advance students. The piece should be polished and memorized. The students are encouraged to bring as many family members as they

wish! The form and rules are available in page 12.

1. The maximum number of programs for each recital is 25.
2. Each program is limited to 3 minutes. Supervising teacher has the authority to stop a program that exceeds 3 minutes.
3. Each teacher is limited to 3 entries per recital.
4. Applications are accepted on a first come first serve basis

regardless of the application deadline.

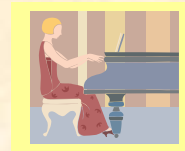
Mail application and one check (total of students' fee made out to MTAC OCC) to:

**Angela Leu:**  
27 Coca  
Foothill Ranch, CA  
92610

### Future Performances

- November 23, 2008
- January 20, 2009
- April 13, 2009

All on **Sunday 2pm**  
**Saddleback Room**  
**Mission Viejo City Hall**



## ADULT STUDENT WORKSHOP

**October 12  
Sunday, 1pm**

**Saddleback Room,  
Mission Viejo City  
Hall**

**Future Dates/Location**  
(All on Sunday 1pm)

► **December 7**

TBA

► **February 15**

Mission Viejo City Hall

► **April 19**

Mission Viejo City Hall

► **June 14**

Laguna Hills Community  
Center

Contact

**Christine Jones**

[pianousa@yahoo.com](mailto:pianousa@yahoo.com)

(949) 859-7463

## Saddleback College Concerto Competition



**November 22, 2008 (Sat)**

Time: TBA

at Saddleback College

Deadline for application:  
October 24

Detailed information  
and application  
procedure will be on  
**the October  
Newsletter.**

Contact  
**Pam Worcester**  
949-581-1467  
[pocky@cox.net](mailto:pocky@cox.net)



### IMPORTANT DATES

Sep. 15 On-line Registration begins

Sep. 24 Training Session

Nov. 15 11:59PM  
On-line registration closes

Jan.1-28  
Fill in Evaluation Form on-line

### EVALUATION DATES:

#### Panel Regional:

Feb. 28, Mar. 1, Mar. 7/8

Strings: Mar. 7

Theory: Mar. 7- 8

Voice: Mar. 14-15

Keyboard:

Mar. 21, 22, 28

*All teachers are welcome*

### **CM Training Session**

(any instrument)

will be held at the Saddleback Room, Mission Viejo City Hall, with Judy on September 24 (Wed.) at 9 am.

Please order the keyboard syllabus from the State Office before this meetings, and voice and strings teachers should also order a syllabus.

E-mail Judy, [jenkinsmusic@cox.net](mailto:jenkinsmusic@cox.net), if you are interested.

**Bring the syllabus!**

## Certificate of Merit

### REGISTRATION TIME

IS HERE.

### SOME THINGS

### YOU NEED TO KNOW

♪ Registration packets are available at the September & October branch meetings.

♪ On-line Registration opens Sept. 15 and will close at 11:59 pm on Nov. 15. This is the State cutoff date and absolutely no late registrations will be accepted.

♪ Evaluation Forms can be entered on line between Jan. 1 and Jan. 28 and cannot be accepted after that date. NO exceptions.

♪ Branch surcharge fee will be \$8 per student.

## CM NEWS

### Evaluation Dates

- PANEL REGIONALS  
Feb.28/March 1/March 7-8 at TBA

- STRINGS Saturday, March 7 at Saddleback College

- THEORY Saturday and Sunday March 7/8 at the Mission Viejo Library

- VOICE Saturday and Sunday, March 14 and 15 at Faith Episcopal Church in Laguna Niguel.

- KEYBOARD Saturday/Sunday March 21/22 at Saddleback College, and Saturday March 28 at TBA

♪ **The Convention Recital theme for 2009** will be -

**“Irregular Meter”,** including *Frequently Changing Meter, Unusual Meter, Uncommon Meter, No Meter, Hemiola.*

## CM INFORMATION

**ALL TEACHERS, CM OR NOT, SHOULD UPDATE THEIR ONLINE TEACHER INFORMATION PAGE, ESPECIALLY THEIR EMAIL ADDRESS at <https://www.mtac.org/cgi-bin/mtac/index.cgi>**

Much info is going to be sent by email this year, so if you do not have email, please designate someone to receive this information for you, and notify Judy Jenkins.

### Remember:

1. Teachers will not have to delete students that will not be reenrolled. Students that are reenrolled from last year or are newly enrolled will be registered for CM. If a student is reenrolled and then the decision is made to not participate in CM before 11/15, then the reenrolled check box on the registration page must

be unchecked. Teachers will be charged for all students that have the reenrolled box checked.

2. Teachers should not delete high school students even if they are no longer their teacher. Teachers must inform the branch CM Chair about high school students that are transferring teachers.

# Announcements

**MTAC Orange County North Branch** invites you to an **Open House---**

For **"Music Educators' Marketplace Showcase: "A Store-in-a-Box"**

**Saturday, September 13**  
10 AM to 12 Noon at  
**The Piano Studio of Carolyn Biller**  
1032 Castlegate Lane  
N. Tustin 92705

Off 55 Freeway at 17th Street-Tustin, east on 17th Street, left on Newport Ave.

and right on Castlegate Lane; 3rd house on the right.

**Teaching enrichment materials** are the specialty of Music Educators' Marketplace (a teachers' cooperative). Aids for organizing your studio, handbooks, music theory, music history, group teaching, lab and camp activities, books, games and accessories will be presented.

Teachers may examine

samples, glean ideas, win attendance prizes and order materials at this traveling store party.

Refreshments.

**Reservations required** by Thursday, **September 11** to:  
**Carolyn Biller**  
**cbiller@sbcglobal.net**  
**1-714-544 7990**



# Events

♣ **Pacific Symphony**  
<http://www.pacificsymphony.org/>

♣ **Philharmonic Society**  
<http://www.philharmonic-society.org/>

♣ **Saddleback College**  
<http://www.saddleback.edu/arts/>

♣ **Irvine Valley College**  
<http://www.ivc.edu/arts/pages/default.aspx>

♣ **UC Irvine**  
<http://music.arts.uci.edu/inconcert.php>

♣ **CSU Fullerton**  
<http://www.fullerton.edu/arts/events/>

♣ **Fullerton College**  
<http://fcfinearts.fullcoll.edu/division/events.asp>

♣ **Concordia University**  
<http://www.cui.edu/aboutcui/community/thearts/index.aspx?id=116>

# Members

## Mailing Newsletter

Those of you wishing to continue receiving the newsletter as a hard copy - please send your request and a check: \$15 (for 9 issues plus possible addendum issues) to:

**Antoinette Parrott at 23742 Via Navarra, Mission Viejo, CA 92691.**

## *Information please* **about Recital Facilities in OC**

We hear that some new venues have recently appeared in Orange County.

If you have used or know of any good recital facilities, please forward the names of the facilities. The result will make a good database

to share among members and will be available on our new branch website.

Just names and your broad idea of location, etc. will be helpful.

Please E-mail to Keiko Ikeda:  
[toneofbell@yahoo.com](mailto:toneofbell@yahoo.com)

Please put "Recital Facility Info." in your message title box.

## Newsletter

## Advertisements

### Guidelines:

*Non-Commercial /educational events*

### OCC Members:

Free with approval of the branch

### Non-OCC

Members: Free with approval of the branch

*Commercial, Buy & Sell, and Businesses*

\$20.00/issue (9 issues/year) for a partial space of the page

Larger ads will be charged more.

Needs branch's approval

**Only the advertisements which are beneficial for members' professional life will be published.**

## Advertisements



For recent back numbers, please visit:

MTAC Orange Coast  
Cities Branch  
Website:  
[www.mtacocc.org](http://www.mtacocc.org)

---

Newsletter  
Editor:  
Keiko Ikeda

Deadline for Oct.  
2008 Issue: Sep. 20

Please e-mail  
information to  
[toneofbell@yahoo.com](mailto:toneofbell@yahoo.com) /  
[toneofbell@hotmail.com](mailto:toneofbell@hotmail.com)

Postal Mail to:  
85 Matisse, Aliso Viejo  
CA 92656

### ♠♠ Pianos for Sale ♠♠

*Best prices on Pre-owned Yamaha, Kawai and Steinway Pianos with great teacher discounts.*

### *Accent Piano Service*

Larry Pisano RPT

### *Back to School Special*

**Buy-Rent-Sell:** Check out our new piano inventory

🎵 949-922-2440

🎵 [www.accentpiano.com](http://www.accentpiano.com)

**NEW/IMPROVED Website:**  
[www.CasperPianoService.com](http://www.CasperPianoService.com)

**On-Line appointment requests are now available, plus other resources and information useful to piano owners.**

Bob Casper  
(949) 448-0353  
[bcasper@cox.net](mailto:bcasper@cox.net)



**Piano Service**

## Community Service Recital Instructions/ Directions 2008-2009

Send the completed form with one check for \$5.00 per student (\$5.00 per family of siblings) or \$6.00 per ensemble made out to MTAC Orange Coast Cities, to:

Jennifer King, 6 Tremount, Laguna Niguel, CA 92677

at least two (2) weeks before the scheduled recital to secure placement in the program.

Only 3 students are allowed per teacher and there is a limit of 25 students per recital. Only the first 25 applications received will be honored, so REGISTER EARLY! Students are to perform one piece or movement. There will be no exceptions! Repertoire must be at least 16 measures in length, with a maximum time of 3 minutes per piece. Pieces are to be memorized, polished and performance ready. (This is not a venue to “try-out” a piece in front of an audience).

No community service credit will be given if solo music is not memorized.

### Please share the following information with each participant:

Teachers are welcome to attend these recitals to assist MSSL members and senior residents of the care centers. Parents with children under 7 years are also welcome to stay.

**PLEASE NOTE:** All performances this year are on **Sundays at 3:00 PM**.

**PARKING: Aegis** - Children should be DROPPED OFF 15 minutes before the recital begins, and PICKED UP after the recital, usually about an hour later. Teachers and high school MSSL members will supervise young children.

For both **Aegis** and **Freeom Village**:

Do not park in the retirement facility parking lot since parking spaces are for residents and their guests only. Park along the streets near the retirement facility.

**PERFORMERS:** Performers MUST stay for the duration of the recital.

Performers are requested to dress as nicely as possible to convey respect for the occasion. Casual attire, jeans, t-shirts and athletic wear are not appropriate. Check MSSL dress code in [www.MTAC.org](http://www.MTAC.org).

**NOTE:** In the best interest of the senior citizens' health, performers who are sick with cold or flu are requested not to perform and inform their teacher.

**CREDITS:** Five hours of Community Service Credit will be awarded to each performer. Three hours of Community Service Credit will be awarded to ushers and assistants who contact Jennifer King at (949) 661-1098 at least 2 weeks before each recital. They are required to dress appropriately as well. Approximately 3-4 ushers will be needed at each recital.

### DRIVING DIRECTIONS FROM THE 5 FREEWAY:

Maps/Directions are available at OCC website: [www.mtacocc.org](http://www.mtacocc.org)

(To be given to each student performing for Community Service Recitals)

## COMMUNITY SERVICE RECITAL ETIQUETTE FOR PERFORMERS

The **Community Service Recitals** are an extremely popular venue for teacher's students to play their pieces. With a few exceptions, students and teachers are doing a fine job keeping pieces within the time limits (**3 minutes max**), **making sure student pieces are memorized**, and having students help out as ushers. Please share the following information with your students before their performance:

**Show Up On Time:** The instructions online and in the September newsletter clearly state that the performing student should arrive at least 15 minutes prior to his/her performance. (20 to 30 minutes for ushers). If it is a 3:00 p.m. performance, drop off time is 2:45. If the parent is staying (for those children ages 7-9), they must arrive early to find parking outside the facility. Do not expect to park at the facility. If your student arrives past the performance start time, they will not be allowed to play. It is a sign of disrespect to those students who have made the effort to be there on time.

**Postponed Students:** If your student is postponed by us because the recital is full, we will reschedule them to the next recital date, if you wish, on a priority basis according to the post mark date on the application envelope. If there is a large number of postponed students we may ask you to resubmit the names of those students who will be playing at the next recital. If we do not hear back from you at least two (2) weeks prior to the next recital confirming your student's attendance, we will not place your student on the program, and all money paid to the MTAC will be forfeited.

**Canceled Students:** If you cancel your student because he/she is sick or is unprepared, you forfeit the place in the recital and all monies paid. Do not assume that we will put your student into the next recital!

**Dress Code:** The instructions online and in the September newsletter clearly state that the performing student should be dressed in appropriate recital attire. Casual attire, sweatshirts, jeans, mid-driffs, t shirts and athletic wear, and Ugg boots, are not appropriate. Again, this is a sign of disrespect to the audience, and to the other students who made the effort to dress appropriately.

**Stay For The Entire Performance:** Students are expected to stay for the duration of the performance. We realize that the small children get restless, and we intend to keep the recitals to within one hour. The older students, however, are expected to be examples and stay through the entire recital.

*THANK YOU TO ALL THE TEACHERS AND STUDENTS WHO HAVE FOLLOWED THE GUIDELINES AND MADE THESE RECITALS SO POPULAR.  
KATHERINE BUCK AND JENNIFER KING*

### Freedom Village

23442 El Toro Road, Lake Forest, CA

Exit 5 Fwy at **El Toro** and go east about 1 mile  
Pass **Rockfield**, pass **Raymond**.  
Turn Right on **Cornelius**. To park turn right into shopping parking lot next to **Red Barn**, and park in center of the lot away from the store front. Walk across the street to **Freedom Village**.

- Check [www.mtacocc.org](http://www.mtacocc.org) for detailed map/directions.

### Aegis Assisted Living

32170 Niguel Road, Laguna Niguel, CA

Exit 5 Fwy at **Crown Valley** and go west to **Niguel Rd.**, approx. 3 miles  
Turn Left on **Niguel Rd.** and go approx. 2.5 miles to **Ridgeway** and take your first right into the driveway.

- Check [www.mtacocc.org](http://www.mtacocc.org) for detailed map/directions.

## Community Service Recital Application 2008-2009

### Recital Date/ Time/ Location/Postmark Deadline for 2008-2009

Sunday, <b>October 19<sup>th</sup></b> , 2008 3:00 p.m.	<b>Freedom Village</b>	<b>DEADLINE-</b> Saturday, <b>October 4th</b>
Sunday, <b>December 14<sup>th</sup></b> , 2008 3:00 p.m.	<b>Aegis Asst Living</b>	<b>DEADLINE-</b> Saturday, <b>November 29th</b>
Sunday, <b>February 22<sup>nd</sup></b> , 2009 3:00 p.m.	<b>Freedom Village</b>	<b>DEADLINE-</b> Saturday, <b>February 7th</b>
Sunday, <b>April 19<sup>th</sup></b> , 2009 3:00 p.m.	<b>Aegis Asst Living</b>	<b>DEADLINE-</b> Saturday, <b>March 29th</b>

Make **Checks payable** to **MTAC Orange Coast Cities**  
**\$5 per student (or \$5 per family of siblings), or \$6 for each ensemble**

Please write recital date on the memo line on the check. Mail to:  
**Jennifer King, 6 Tremount, Laguna Niguel, CA 92677**

.....  
Application Form

**Teacher's Name** \_\_\_\_\_

**Recital Date:** \_\_\_\_\_

Phone # \_\_\_\_\_

**Recital Location:** \_\_\_\_\_

**Student Names:**

**#1** \_\_\_\_\_

Age \_\_\_\_\_ Level \_\_\_\_\_ Fee \_\_\_\_\_

Title \_\_\_\_\_

Composer \_\_\_\_\_

Performance Time \_\_\_\_\_ (3 min. max) Tempo \_\_\_\_\_

**#2** \_\_\_\_\_

Age \_\_\_\_\_ Level \_\_\_\_\_ Fee \_\_\_\_\_

Title \_\_\_\_\_

Composer \_\_\_\_\_

Performance Time \_\_\_\_\_ (3 min. max) Tempo \_\_\_\_\_

**#3** \_\_\_\_\_

Age \_\_\_\_\_ Level \_\_\_\_\_ Fee \_\_\_\_\_

Title \_\_\_\_\_

Composer \_\_\_\_\_

Performance Time \_\_\_\_\_ (3 min. max) Tempo \_\_\_\_\_

