



MTAC ORANGE COAST CITIES BRANCH NEWSLETTER January 2008

Editor: Keiko Ikeda
toneofbell@yahoo.com

Deadline for Feb 2008 Issue: Jan. 20

TABLE OF CONTENTS

Page 1	Calendar
Page 2	Angela's Aria
Page 3, 4	Baroque Festival / Showcase Recital
Page 5	VOCE Recital / Community Service Recitals
Page 6	Bach Festival
Page 7	Adult Student Workshop / Composers Today / Young Composers Guild
Page 8	Certificate of Merit
Page 9	CM Council Announcement
Page 10, 11, 12	Announcements / Events / Advertisements

CALENDAR

(♠ meetings, deadlines, ♪ performances ♦ workshops)

January

- Jan. 5 **Deadline** for Jan. 20 **Showcase Recital** –mail form & dues to **Nilou Sarraf**
- Jan. 9 ♠ **Branch Meeting** 10am (LHCC) **Guest - E.L. Lancaster, "Teaching on ear-training"**
- Jan. 9 **Deadline** for **Baroque Festival online sign-up**
http://www.mtacocc.org/ol-line_registration.htm dues to **Angela Leu**
- Jan. 9 **Deadline** for **VOCE Recital online sign-up**
<http://www.mtac.org/programs/voce/index.shtml> dues to **Shelley Johnson**
- Jan. 20 ♪ **Showcase Recital** 2pm (MVCC)
- Jan. 25 **Deadline** for **Bach Festival online sign-up**
<http://www.scjbf.org> dues to **Itoe Honda Akimoto**
- Jan. 28 **Deadline** for **CM online** Evaluation Form www.mtac.org - fill in titles of repertoires

February

- Feb. 1 **Deadline** for Feb. 17 **Adult Student Workshop** -contact **Christine Jones**
- Feb. 2 ♪ **Baroque Festival** TBA (Saddleback College)
- Feb. 9 **Deadline** for Feb. 24 **Community Service Recital** -mail to **Jennifer King**
- Feb. 15 **Deadline** for **Composers Today's** regional application/dues to **Angela Leu**
- Feb. 15 **Deadline** for **Young Composers Guild** applications/dues to **YCG Chair Ron Anderson** (626-836-8935)
- Feb. 16 ♪ **VOCE Recital** TBA (Saddleback College)
- Feb. 13 ♠ **Branch Meeting** 10am (LHCC) **Craig Richey, "Piano / Chamber Ensemble"**
- Feb. 17 ♦ **Adult Student Workshop** 1pm (MVCC)
- Feb. 23 ♪ **Bach Festival** TBA (Geneva Presbyterian Church, Laguna Woods)
- Feb. 23/24 ♪ **CM Panel Regional Audition** (also on Mar. 1 & 2)
- Feb. 24 ♪ **Community Service Recital** 3pm (Freedom Village, Lake Forest)

ANGELA'S ARIA *President's Message*

Happy New Year everyone! I hope you and your family had a joyful holiday season. Our last meeting program was truly heartwarming with **Pennie Foster** and **M'Lou Dietzer's** inspiring duet performance. We enjoyed **Nancy Lau's** newly published collection, *Gems for Two*, by **FJH**. Other outstanding selections by *Handel, Debussy, John Congliano*, and *David Karp* were also celebrated at this mini concert. **Susan Zevnik** of **Da Capo Music** brought plenty of duet books to share and display. It was a wonderful program. Thank you all!

Looking forward in 2008, we will again have a parade of events. All Festivals, Recitals, Certificate of Merit, and Workshops information are available at our branch website, in the branch yearbook/directory, and newsletter. I have counted that there will be no less than 26 events before the State Convention. It really is a lot of events for one branch. And the only reason that we can pull it all off is because of many dedicated members' efforts and hours that they give to make things happen. Once again, please accept my deep appreciation for your contribution.

Friends of Today's Music has commissioned composer **Paul Chihara** to write a new trio for flute (violin), cello, and piano, aimed specifically at advanced level students. Any teachers with students interested in premiering this new work at the 2008 convention should contact the chair, **Catherine O'Connor** at cathoc@aol.com for more details.

The 2008 **Adult Performance Program South** will take place on **Sunday, April 13, 2008**, at **Chapman University** in Orange from 8:30 a.m. to 4:30 p.m. The deadline to submit an application is **February 15, 2008**. Master teachers for this event include **Antoinette Perry** (USC faculty), and **Susan Svrcek** (Pasadena Conservatory). To obtain an application form, please visit the www.mtac.org website and click on Adult Performance, or call **Dr. Joseph Matthews** at 714-771-7190.

The **Improvisation E-Newsletter** is available for any member interested in learning more about the **Improvisation Program** and who wants to be kept up-to-date on new information regarding Improvisation. To request the newsletter, contact Improvisation Council Chair, **Alexandra Hawley**, alidoremi@aol.com. Please include our branch name along with your request.

Dr. E. L. Lancaster will present "*The Ears Have It*" at our next meeting on January 9th, I look forward to seeing you at 10:00 a.m. LHCC. Have a fabulous 2008!

Angela Leu

- A Deadline Reminder -

The **deadline** for **Adult Student Workshop** (Feb. 17) is on **Feb. 1**. If you are interested, please contact **Christine Jones** 859-7463 BEFORE you receive February Newsletter.



PROGRAM

2008 BAROQUE FESTIVAL



Date: Saturday, February 2, 2008
Place: Saddleback College
Entry Deadline: Wednesday, January 9, 2008
Online Sign-up at http://www.mtacocc.org/ol-line_registration.htm
Entry Fee: \$25.00 per student

See the details & rules at the web registration site. *Slight rule changes were made this year.*
<http://mtacocc.classicaledge.com/ClassicalEdge/templates/artisticearthtones/base.jsp>
Please note that there is a slight increase to postage.

Rules for Baroque Festival 2008

- The Baroque Festival is open to all levels of piano, instrumental, and voice students, both solos and ensembles.
- Students will receive awards of medals, ribbons, and certificates based entirely on adjudicators' decisions. Students are separated into the following age categories: ages 11 and under, ages 12-14, ages 15-19, and adult. The top 25% of students in each age category receive 1st Place Medals, the next 25% of students in each category receive 2nd Place Blue Ribbons, the next 25% of students receive Honorable Mention Red Ribbons, and the next 25% receive a Yellow Participation Ribbon.
- Teachers are limited to 8 students each. Contributory Members may NOT enter students. Each student must actually study with the teacher who is entering him/her in the festival, and should have studied with the teacher for six months prior to the festival, unless permission is given by the previous teacher, or the teacher change was necessary because of a geographic move.
- Students may enter either the Baroque Festival or Bach Festival, but NOT both. There is a five minute time limit per performer. Pieces longer than five minutes may be ended by the president.
- A maximum of two pieces per student are allowed only if they are by the same composer and from the same collection. Each piece must be under two minutes in length.
- All music must be memorized with the exception of duets, ensembles, and accompanists.
- Music should be in its original form NOT simplified or transcribed.
- No keyboard concerti will be allowed.
- Grounds for festival disqualification include failure to bring music for the judges, bringing photocopied music, performance of a piece other than the piece entered, and incomplete or inaccurate entry applications.
- Teachers are expected to work at the festivals in which they have entered students; failure to do so may result in a monetary fine or other penalties.
- Teachers may not accompany their own students.

On the Festival day, make sure that each student knows the rules for recital etiquette, dresses appropriately, and brings a copy of the music (NO PHOTOCOPIES) for the adjudicators. Following each festival, certificates and evaluation sheets will be mailed to the teachers. Medals and ribbons may be picked up at the branch general meeting or from the chairperson or may be mailed if sufficient postage is included.

(Baroque Festival: Continue to page 4)

(Baroque Festival: Continue from page 3)

After signing up online, please mail the following items to **Angela Leu, 27 Coca, Foothill Ranch, CA 92610** or bring them to the **January 9th Branch Meeting**.

- 1) One check for registration fees made out to MTAC, Orange Coast Cities.
Solo entries: \$25 each
Duet/ensembles: \$25 for the first student + \$12.50 for each additional student
- 2) Please include postage according to the number of students entered:
1-2 entries \$1.00 5-6 entries \$2.50
3-4 entries \$1.75 7-8 entries \$3.25

Note: Registration fees and postage are non-refundable.

Teachers may request AM or PM if absolutely necessary. More specific scheduling requests cannot be accommodated.

Absolutely NO CHANGES, ADDITIONS, OR LATE ENTRIES will be accepted after the January 9, 2008 deadline.

Any questions or request please contact:
Angela Leu at: (949) 697-2888 or leulu88@yahoo.com

2008 SHOWCASE RECITALS



DATE & TIME: Jan 20 and April 13, 2008
They are both on **Sundays at 2:00 PM**
LOCATION: Mission Viejo Civic Center

You can fill out the application by going to www.mtacocc.org . Click on “forms” and choose “showcase.” For your convenience, the form is also available in **October Newsletter** (see the end page.) Please contact **Nilou Sarraf** (949) 858-4275 or nilousarraf@cox.net.

Mail application and one check (total of students’ fee made out to MTAC OCC) to:
Nilou Sarraf: 28402 Quiet Hill, Trabuco Canyon, CA 92679-1117

DEADLINES: Jan. 5 for Jan. 20 recital **Mar. 30** for April 13 recital

2008 VOCE RECITAL

- **Vocalists, Orchestral instrumentalists, Chamber music, Ensembles** -



DATE & TIME: Saturday, February 16, 2008, TIME TBA

LOCATION: Saddleback College

Application Form & details: <http://www.mtac.org/programs/voce/index.shtml>

DEADLINE January 9, 2008

Send entries

- 1) One self-addressed, stamped [envelope](#)
- 2) A [check of fees](#) (\$30 per soloist, \$20 per each member of an ensemble)
- Make payable to **MTAC Orange Coast Cities**

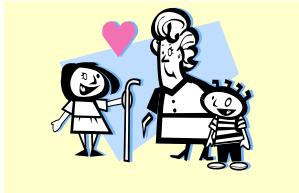
To: **Shelley Johnson: 2 Centaurus Way, Trabuco Canyon, CA 92679-5115**



*We have also heard from **Long Beach Branch**, and they would like to join our branch with **Irvine Branch** (formerly- OCC North) as well. It should be an exciting and varied program!*

Any questions please contact me at shelleyjean1@cox.net or (949) 888-0313.

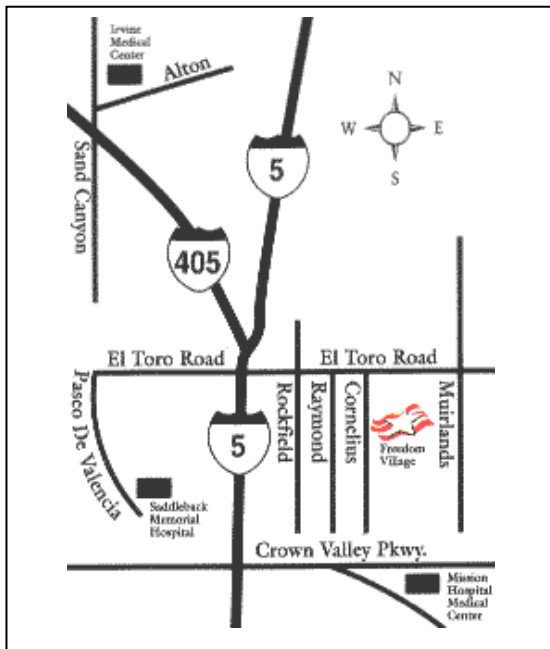
COMMUNITY SERVICE RECITALS



DATE: Sunday, February 24, 3:00PM

LOCATION: Freedom Village of Lake Forest

23442 El Toro Road, Lake Forest, CA 92630 (949) 472-4700



The next **Community Service Recital** will take place at **3:00 p.m. on Sunday, February 24** at **Freedom Village** in 23442 El Toro Rd., Lake Forest, CA. Application forms and maps are available in the **September newsletter** and on the website at: www.mtacocc.org (Click on the "Forms" box.)

Mail forms & one check for the total amount of student's fees made out to MTAC Orange Coast Cities to: me,

Jennifer King (661-1098)
6 Tremount, Laguna Niguel, CA 92677

Deadline for Feb.24 recital: **Saturday, Feb. 9**

2008 BACH FESTIVAL



Date: Saturday, February 23, 2008

Place: Geneva Presbyterian Church
24301 El Toro Road, Laguna Woods

Online Registration Deadline: Friday, January 25, 2008

Registration will close at **11:59 PM**

Entry Fee: \$25.00

Bach Festival Chair
Itoe Honda Akimoto
25582 Maximus Street
Mission Viejo, CA 92691
(949) 951-1677



From this year, all students must be registered through the new **SCJBF online system**. The 2008 application forms will be available online after November 2008 on the **Southern California Junior Bach Festival** website at <http://www.scjbf.org>. If you have questions, please contact Pamela Worcester, Region V Bach Chair at 949-581-1467 or pocky@cox.net.

Please do **NOT** try to register at www.mtacocc.classicaledge.com. The forms that remain on the branch website mtacocc.org are for your reference only. You will need to have all of the information that was on the old application available before trying to register online.

MTAC, Orange Coast Cities Branch Rule:

- Pieces from the *Anna Magdalena Bach Notebook* will not be accepted for the **Bach Festival**. Students playing works from the *AMB Notebook* should enter the **Baroque Festival** instead.
- Students may play in either the **Baroque** or the **Bach Festival**, but not both.

Teachers interested in the Complete Works Official List must look at the 2008 list which is also on the **SCJBF** website.

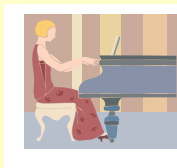
Please mail the following items to **Itoe Honda Akimoto** or bring them to the **January Branch Meeting**.

- 1) One self-addressed, stamped envelope.
- 2) A check made payable to **MTAC, Orange Coast Cities Branch: \$25** x the number of students entered + **postage:**

1-2 entries \$1.00	5-6 entries \$1.75
3-4 entries \$1.50	7-8 entries \$2.00
- 3) **DO NOT RETURN HARD COPIES OF THE 2008 APPLICATION.**
These must be submitted online!

Absolutely no changes or additions will be made after the January 25th deadline!

ADULT STUDENT WORKSHOP



DATE: Sunday, February 27, 1:00PM
LOCATION: Mission Viejo Civic Center

Deadline: Feb. 1

Please contact **Christine Jones** 859-7463 for details.

COMPOSERS TODAY



IMPORTANT DEADLINES FOR ENTRY

February 15, 2008 CT Evaluation manuscripts due to **Angela Leu** 949-697-2888

March 30, 2008 State Contest Entries due to **Angela Leu**

April 15, 2008 Convention Symposium. Each teacher sends applications directly to Symposium Chair, **Tamara Pease Ordaz** 562-697-7989

Please visit state website <http://www.mtac.org/programs/ct/index.shtml> for detail.

YCG (YOUNG COMPOSERS GUILD)



February 15, 2008 is the **Postmark Deadline** for YCG applications to **YCG Chair, Ron Anderson** (626-836-8935).

Please visit state website <http://www.mtac.org/programs/ycg/index.shtml> for **Young Composers Guild information and Fill-In Forms**.



CERTIFICATE OF MERIT



♣ **January 28 11:59 pm (online evaluation form DEADLINE)**

www.mtac.org

Evaluation Dates

March 8 & 9	(Sat & Sun)	Voice
March 15	(Sat)	Violin
March 15 & 16	(Sat & Sun)	Theory
March 30	(Sun)	Keyboard
April 5 & 6	(Sat & Sun)	Keyboard

- *Message from Judy Jenkins* -

IT'S TIME FOR TEACHERS TO TAKE THE NEXT ONLINE STEP! Very soon, at every lesson, collect the information you need to enter the students' repertoire online. You will need the composer's first and last names (be sure to enter those in the correct field!) and the title.

Keep your NEW PIANO or other syllabus handy to find the page number of the syllabus piece that is required for every level. The syllabus piece information, including the title as listed in the syllabus and **the syllabus page must be entered or the evaluation information will not be saved!** **EEEEK!** Follow all the rules in the front of the syllabus for entering students in convention and for the repertoire requirements for each level. If you have questions, please call or email Judy Jenkins.

If you are entering a student in **the Convention Festival Recital**, the piece selected must be the same one that is listed as their syllabus piece. This is true even if all their pieces are in the syllabus. Make those two entries match.

The syllabus, branch honors and convention pieces are all chosen by using a menu. Click on the down arrow to the right of the "Choose Syllabus Piece" box and click to make your selection. **Then click again outside the box** and your piece will be displayed!

For carpools, siblings, or ensembles remember to enter every student with the same student number so that they can be scheduled together.

Finally, remember to **press "Submit"** after every student entry or all that work will be gone, alas!

The information below is from the **CM Council**, and will be strictly enforced during our branch theory testing.

(*CM: Continue to page 9*)

(CM: Continued from page 8)

CM COUNCIL ANNOUCEMENT on THEORY TEST

Many branches have been struggling with the management of unethical behavior in regard to CM theory evaluations. The CM Council has reviewed numerous unethical situations and requests for help and has worked to find manageable solutions... The national SAT and AP testing guidelines were reviewed ... They can be found at: <http://www.collegeboard.com/student/testing/sat/testday/bring.html>

Theory Test Room Guidelines

Please inform students that these theory room guidelines will be enforced. Students who are caught violating the guidelines will be escorted from the theory room and will not be allowed to finish the theory test.

No electronic devices are allowed in the theory test room. This includes, but is not limited to:

- MP3 players, ipods, etc.
- Cameras
- Cell phones (*see below)
- Backpacks
- Once students have entered the test room, they may not leave except when escorted for other portions of the exam (ear training). Students need to be monitored when using the restroom for the protection of the student and to prevent sharing theory questions and answers.

It is recommended that a theory room monitor move around the test room to support these guidelines.

* Students may need to bring a cell phone to call their parents. They must check them at the front desk, where they will be put into a labeled baggie along with any other “forbidden” electronic devices. They can be retrieved when they turn in their theory test. As an alternative, they may borrow a phone from a theory room monitor to call parents. Please emphasize to your students that these guidelines are NOT JUST A SUGGESTION! You don’t want them to work hard all year and lose their opportunities for CM success over a CELL PHONE!

- **No materials, whether theory tests, evaluator sheets or results, will be returned to the teachers until after the last day of evaluations, which is April 6 or whenever all results are entered online. Please don’t rush us!**
- If you are requesting an evaluation day, at the bottom of the form use the following:

For piano: *March 30: Day 1*
April 5: Day 2
April 6: Day 3

For voice: *March 8: Day 1*
March 9: Day 2

Happy preparation!

Judy Jenkins: CM Chair

(859-8849) jenkinsmusic@cox.net 26762 Merino Cir. Mission Viejo, CA 92691-5434

♪ **Evaluation Forms** can be entered on line **between Jan. 1 and Jan. 28, 2008** and cannot be accepted after that date. **NO exceptions.**

♪ Revised **Syllabus, Technique Guidelines:** Call MTAC State Office **(800) 834-3340** to order.



BRANCH MEETINGS

♠ **Wednesday, January 9, 2008, 10AM**
(Laguna Hills Community Center)



Our program for January will be presented by **Dr. E. L. Lancaster**. The title of his presentation is "*The Ears Have It*". This program should give us all a jump-start on motivating and helping our students to listen. There are so many parts to listening: major, minor, intervals, chords, rhythms, articulation, dynamics, etc. which they must have for the CM test; then there is listening to what they produce on their instrument so they can adjust their playing to create exactly what their inner ear hears. I must admit that ear-training is a weak part of my teaching and am really looking forward to hear what **E. L.** has to say. Some of his materials will be available for sale at the meeting.

Dr. Lancaster completed his doctorate at **Northwestern University** in Evanston, Illinois. Then, joined the faculty of the **University of Oklahoma, Norman**. He founded the graduate programs in piano pedagogy at **OU** and served as the major professor for over 50 doctoral dissertations related to piano performance and pedagogy.

Dr. Lancaster now holds the position of Vice President/Keyboard Editor-in-Chief for **Alfred Publishing Company**.

(Bobbette Cameron)

ANNOUNCEMENTS

♣ **GRANTS FOR PIPE ORGAN STUDY**

The **American Guild of Organists, Orange County Chapter** announces the availability of Grants of \$50 to \$500 for pipe organ study.

Students, grade school through High School, who have a basic piano background (CM level 3 and up) who wish to study pipe organ may qualify to audition for a grant on **Feb 2, 2008** at **Geneva Presbyterian Church** in Laguna Woods. Applications are due January 11, 2008. Call **Jennifer Puh** for details. (949 551-8862)



♥♥♥ *Some **Mozart news** to share...*

*sent by **Laurie Meinhold** ♥♥♥*

♣ **Free access to Mozart's Complete Works**

The **Internationale Stiftung Mozarteum** (ISM; International Mozart Foundation) has digitized **Mozart's** music, and in this groundbreaking project is making it accessible to everyone on its web site. The 'NMA

(Continue to page 11)

(Continued from page 10)

Online is a digital version of the **Neue Mozart Ausgabe** (NMA; New Mozart Edition), a scholarly edition of Mozart's complete works that was compiled by musicologists from around the world in the last 50 years. The initiators have acquired all digital rights to the NMA from Bärenreiter-Verlag in Kassel, the publisher of the printed edition. Free access will be provided on the Internet at <http://dme.mozarteum.at/>. The music pages are linked with the scans of the NMA's critical reports. Comprehensive search capabilities allow users to easily find, study, and print any of Mozart's works as PDF file. The **NMA Online** is the first extensive, up-to-date complete works edition that is available to everybody at no charge.

♣ **Mozart's Musical Diary Unlocked**

Previously unheard composition to be available online.

This latest addition to the **British Library's Turning the PagesT** is a digitized version of the original manuscript. It contains 30 pages and 75 musical introductions to some of **Mozart's** most famous compositions as well as the tantalizing opening bars of a number of lost works, including a *'Little March in D'*, recorded here for the first time. Its pages can be 'virtually' turned and viewed on-line on the **British Library's** website:

www.bl.uk/turningthepages and in the **Treasures Gallery of the British Library**, and, for the first time on **Turning the PagesT**, users can click on each of **Mozart's** compositions and listen to the first introductory bars of music performed by musicians from the **Royal College of Music**.

EVENTS/CONCERTS

♣ **13th Fullerton College Annual Piano Ensemble Festival**

January 26th, 2008, 7:30PM at Fullerton College Campus Theater.

Info: http://music.fullcoll.edu/season/calendar_detail.asp?calendarid=5EF0BC7A15BD

♣ **Pacific Symphony Events**

<http://pacificsymphony.entericorp.com/>

♣ **Philharmonic Society Events**

<http://www.philharmonicsociety.org>

♣ **Saddleback College Events**

http://www.saddleback.edu/ap/fa/PDF/PerfArtsBrochureF07_001.pdf

♣ **Irvine Valley College Events**

<http://www.ivc.edu/arts/pages/default.aspx>

♣ **UC Irvine Events**

http://www.arts.uci.edu/events_listview.php?month=200801

♣ **CSU Fullerton Events**

<http://www.fullerton.edu/arts/events/FutureMonthsInfo.html>

♣ **Fullerton College Events**

<http://music.fullcoll.edu/season/calendar.asp>

◆ **Eye-exam reminder for members...**

- sent by Bob Casper





Teacher Wanted Scam - AGAIN?

If you have received an e-mail message from:

- a parent or an adult from out of town
- he/she is mentioning a student (their child, nephew, house guest, etc.) will study music for certain months in our area
- asking you the total sum of tuition for that period

We have received information from some teachers that this maybe the scam, and you should be very careful in dealing with these types of request.

In the past teachers have received a check, deposited it to a bank, and then were immediately asked to refund the money. They did so, but the original check turned out to be drawn on an account with no money. So, in the end, these poor teachers were out the amount of the total tuition from their pocket.

ADVERTISEMENTS

♠♠ **Pianos for Sale** ♠♠

Best prices on Pre-owned Yamaha, Kawai and Steinway Pianos with great teacher discounts.

Accent Piano Service Larry Pisano RPT

January Special!

*One month **FREE** on all piano rentals*

Buy-Rent-Sell

Check out our new piano inventory

🎵 949-922-2440

🎵 www.accentpiano.com



♣♣♣ **CASPER PIANO SERVICE** ♣♣♣

🎵 I want to say **thank you** to everyone that sent students to me looking for a new piano. I was able to help several families find good pianos at a fair price and I am working with a few still. 🎵

Bob Casper 🎵949-448-0353

🎵 bcasper@cox.net

