



# MTAC ORANGE COAST CITIES BRANCH NEWSLETTER November 2007

Editor: Keiko Ikeda  
toneofbell@yahoo.com

Deadline for Jan 2008 Issue: Dec. 20  
(No newsletter in December)

## TABLE OF CONTENTS

Page 1	Calendar
Page 2	Angela's Aria
Page 3	Branch Theme Festival
Page 4	Concerto Competition / Teaching-Demonstration-Technique
Page 5	Community Service Recitals / Adult Student Workshop / Showcase Recital
Page 6	Baroque Festival / VOCE Recital
Page 7	Bach Festival
Page 8	Certificate of Merit
Page 9, 10	Announcements / Events / Advertisements

## CALENDAR (♠ meetings, deadlines, ♪ performances ♦ workshops)

### November

- Nov. 4 (Sun) ♪ **Theme Festival** (*Beethoven, Burgmüller, Brahms*) 9:00am (Saddleback College)  
(Daylight Savings Time ends)
- Nov. 14 (Wed) ♠ **Branch Meeting** 10am (LHCC)  
PIANO DUETS: Pennie Foster & M'Lou Dietzer, joined by Nancy Lau & Susan Zevnik
- Nov. 15 (Thu) **CM Deadline** --- on-line registration [www.mtac.org](http://www.mtac.org)
- Nov. 16 (Fri) **CM Deadline** --- List, fees & work assignment request – mail to **Judy Jenkins**
- Nov. 17 (Sat) ♪ **Concerto Competition** 1pm (Saddleback College)
- Nov. 18 (Sun) ♦ **Workshop** --- **Members' Performance/Pedagogy** 2:30pm (At Margery Burger's)

### December

- Dec. 1 (Sat) **Deadline** for Dec. 16 **Community Service Recital** -mail to **Jennifer King**
- Dec. 9 (Sun) ♦ **Workshop** --- **Adult Student Workshop** 1:00pm (LHCC)  
*NOTE: the date and location of this workshop is changed: originally Dec. 2, to Dec. 9 at LHCC.*
- Dec. 16 (Sun) ♪ **Community Service Recital** 3:00pm (Aegis Assisted Living)

- ♦ No Branch Meeting in December
- ♦ Check page 10 for Jan. & Feb. 2008 events & deadlines

## *ANGELA'S ARIA* President's Message

**The week of October 21, 2007 was difficult for many Californians.** Families were evacuated due to fires, homes were burnt, and loved ones were gone. Our branch member, **Winnie Olson** passed away on October 22<sup>nd</sup>, **Chris Jones'** father passed away in the same week. My thoughts and prayers are with their families and friends. In addition, please join me in sending our condolences to **Su-Shing Chiu** and **Nuhad Eid** for their loss of beloved husbands this summer.

At our October branch meeting we enjoyed a very informative presentation on Technique in the New Piano Syllabus by **Linda Rohmund**. The presentation was done both in person and through DVD. Our Laguna Hills Community Center facility has an impressive DVD viewing system, which is very user friendly. I hope we will utilize this function more often. Thank you, **Lillian Cunningham**, for providing refreshments at the October meeting. Our first Community Service Recital in Freedom Village was successfully conducted on October 21<sup>st</sup>, thanks to **Katherine Buck** and **Jennifer King**. Many thanks also go to **Chris Jones**: Adult Student Workshop and **Nilou Sarraf**: Showcase Recital.

We still have some 2007-2008 yearbooks available for pickup. Please call me 949-697-2888, should you wish to obtain a copy and have not yet done so.

Be sure to check the calendar for upcoming deadlines and events in December and January, since there is **NO NEWSLETTER IN DECEMBER**. The deadline for the January newsletter is December 20<sup>th</sup>.

**Daylight Savings Time ends on the Theme Festival Day, Sunday, November 4<sup>th</sup>.** You may remind your students that they gain an extra practice hour before the festival.

Hope to see all of you at the **November 14<sup>th</sup> meeting**, which is featuring newly published Piano Duets with **Nancy Lau**, **Pennie Foster** and **M'Lou Dietzer**.

Have a safe and joyful Thanksgiving!

*Angela Leu*

*In Memory of*

**Winifred (Winnie) Olson**  
(December 9, 1947 - October 22, 2007)



*She had been in the Orange Coast Cities branch for a long time.  
She will be missed by those who knew her.*



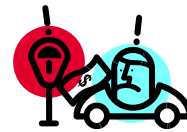
## **PROGRAM**

### ***Attention, please!***

#### **Parking: Saddleback College** for MTAC Festivals and CM

The parking situation at **Saddleback College** has slightly changed. Everyone can still park in **Lot 12** as usual on festival days. However, be sure that **you do not park in a faculty (staff) parking spot** because the campus police will probably give you a ticket. Keep in mind: **these tickets are now real tickets that go on your driving record.** They are no longer just "college campus" tickets. Also, **do not park in the loading zone area** for more than 15 minutes or you run the risk of getting ticketed.

**Please inform your students of these changes!**



#### **Date & Location Change: Adult Student Workshop**

Adult Student Workshop has been rescheduled to:

Sunday, December 9, 1:00PM at Laguna Hills Community Center.

**Please note the change on Branch Yearbook and your own schedule book!**

## **BRANCH THEME FESTIVAL** <Music of **Beethoven, Brahms, and Burgmüller**>

Chairperson: Christine Jones 859-7463

Co-chair: Nilou Sarraf

**DATE & TIME: Sunday, November 4, Starts from 9AM**

(Note: Daylight Savings Time ends)

**LOCATION: Saddleback College**

This year's **Theme Festival** will highlight the music of **Beethoven, Brahms, and Burgmüller.**



## **SADDLEBACK COLLEGE CONCERTO COMPETITION**

**DATE & TIME: Saturday, Nov. 17, 1:00PM**

**LOCATION: Saddleback College Fine Arts Bldg. Room 101**

The Concerto Competition is sponsored by the **Saddleback College Music Department** in cooperation with the Fine Arts Division and the Saddleback College Orchestra Club. It is open to pianists, instrumentalists, and vocalists.

Contact:

**Pam Worcester**, Concerto Competition Chair

(949) 581-1467 [pworcester@saddleback.edu](mailto:pworcester@saddleback.edu)

## **TEACHING / DEMONSTRATION / TECHNIQUE**

**- MEMBER'S PERFORMANCE AND PEDAGOGY WORKSHOP -**

**DATE: Sunday, November 18, 2:30PM**

**LOCATION: Home of Margery Burger**

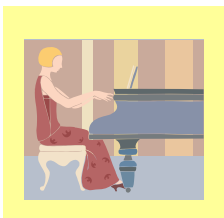
(29542 Alta Terra, Laguna Niguel, CA 92677-7964)

Our Meeting on Sunday, Nov. 18th will include demonstrating pieces that will seem easier if **co-ordinated arm motions** are used. This will not only help technical problems with trills, arpeggios as well as scales but greatly aid memory. Teachers are encouraged to come and share ideas that have been successful in their teaching. We will also listen to teachers who would like to perform.

Call **Margery at 481-7960** if you are planning to come.

## **ADULT STUDENT WORKSHOP**

**- Date & Location Revised -**

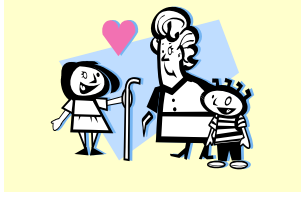


**DATE: Sunday, December 9, 1:00 PM**

**LOCATION: Laguna Hills Community Center**

Contact **Christine Jones** 859-7463

## **COMMUNITY SERVICE RECITALS**



**DATE: Sunday, December 16, 3:00PM**

**LOCATION: Aegis Assisted Living of Laguna Niguel**  
(32170 Niguel Road, Laguna Niguel CA 92677)

The next Community Service Recital will take place at 3:00 p.m. on Sunday, December 16 at Aegis Assisted Living in Laguna Niguel. Application forms and maps are available in the **September newsletter** and on the website at: [www.mtacocc.org](http://www.mtacocc.org) (Click on the "Forms" box.) Mail forms & one check for the total amount of student's fees made out to MTAC Orange Coast Cities to: me,

**Jennifer King (661-1098)** 6 Tremount, Laguna Niguel, CA 92677

Deadline for Dec. 16 recital: **Saturday, Dec. 1**

♪Currently planned **future recitals: February 24 at Freedom, and April 13 at Aegis.**

## **2008 SHOWCASE RECITALS**



**DATE & TIME: Jan 20, 2008 and April 13, 2008**

They are both on **Sundays at 2:00 PM**

**LOCATION: Mission Viejo Civic Center**

You can fill out the application by going to [www.mtacocc.org](http://www.mtacocc.org) . Click on "forms" and choose "showcase." For your convenience, the form is also available in **October Newsletter** (see the end page.) Please contact **Nilou Sarraf** (949) 858-4275 or [nilousarraf@cox.net](mailto:nilousarraf@cox.net).

Mail application and one check (total of students' fee made out to MTAC OCC) to:  
**Nilou Sarraf: 28402 Quiet Hill, Trabuco Canyon, CA 92679-1117**

**DEADLINES: Jan. 5** for Jan. 20 recital  
**Mar. 30** for April 13 recital

## 2008 BAROQUE FESTIVAL



**Date:** Saturday, February 2, 2008  
**Place:** Saddleback College  
**Entry Deadline:** Wednesday, January 9, 2008  
**Entry Fee:** **\$25.00** per student

- ♣ Remember to register [online](#) for **Baroque** Festival. (It will be available later.) This is different from **Bach** Festival's application procedure. (*The following page shows **Bach** Festival's details.*)
- ♣ Students may play at either the **Baroque** or the **Bach Festival**, but not at both. Limit is **eight students per teacher**.

Please mail the following to: **Angela Leu - 27 Coca, Foothill Ranch, CA 92610**  
or bring them to the **January 9th branch meeting**.

- 1) One self-addressed, stamped [envelope](#). (There is no need to send one if you prefer to be notified by e-mail).
- 2) A [check of fees](#) payable to **MTAC Orange Coast Cities**
- 3) If you don't plan to pick up the results of the festival on the **February 13 Branch Meeting**, please include [postage](#):

1-2 entries	\$1.00	5-6 entries	\$1.75
3-4 entries	\$1.50	7-8 entries	\$2.00

Please remember that a MAXIMUM of TWO (2) pieces per student is allowed ONLY if they are by the SAME COMPOSER AND from the SAME COLLECTION. Each piece must be under TWO (2) minutes in length. **There is a FIVE (5) minute time limit per performer.**  
Any questions or request please contact:  
**Angela Leu** at: (949) 697-2888 or [leulu88@yahoo.com](mailto:leulu88@yahoo.com)

**Absolutely no changes or additions will be made after the **January 9<sup>th</sup> deadline!****

## 2008 VOCE RECITAL

**- Vocalists, Orchestral instrumentalists, Chamber music, Ensembles -**



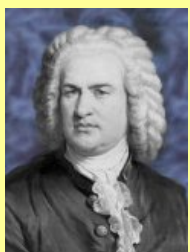
**DATE & TIME:** Saturday, February 16, 2008, TIME TBA  
**LOCATION:** Saddleback College  
Application Form & details: <http://www.mtac.org/programs/voce/index.shtml>  
**DEADLINE** January 9, 2008

Send entries

- 1) One self-addressed, stamped [envelope](#)
- 2) A [check of fees](#) (**\$30** per soloist, **\$20** per each member of an ensemble)  
- Make payable to **MTAC Orange Coast Cities**

To: **Shelley Johnson: 2 Centaurus Way, Trabuco Canyon, CA 92679-5115**  
For more information, contact **Shelley** at (949) 888-0313 [shelleyjean1@cox.net](mailto:shelleyjean1@cox.net)

## 2008 BACH FESTIVAL



**Date: Saturday, February 23, 2008**

**Place: Geneva Presbyterian Church**  
24301 El Toro Road, Laguna Woods

**Online Registration Deadline: Friday, January 25, 2008**

Registration will close at **11:59 PM**

**Entry Fee: \$25.00**

Bach Festival Chair  
**Itoe Honda Akimoto**  
25582 Maximus Street  
Mission Viejo, CA 92691  
(949) 951-1677

From this year, all students must be registered through the new **SCJBF online system**. The 2008 application forms will be available online after November 2008 on the **Southern California Junior Bach Festival** website at <http://www.scjbf.org>. The SCJBF is still doing beta testing through the month of November. If you have questions, please contact **Pamela Worcester, Region V Bach Chair at 949-581-1467 or [pocky@cox.net](mailto:pocky@cox.net)**.

Please do **NOT** try to register at [www.mtacooc.classicaledge.com](http://www.mtacooc.classicaledge.com). The forms that remain on the branch website [mtacooc.org](http://mtacooc.org) are for your reference only. You will need to have all of the information that was on the old application available before trying to register online.

### **MTAC, Orange Coast Cities Branch Rule:**

- Pieces from the *Anna Magdalena Bach Notebook* will not be accepted for the **Bach Festival**. Students playing works from the *AMB Notebook* should enter the **Baroque Festival** instead.
- Students may play in either the **Baroque** or the **Bach Festival**, but not both.

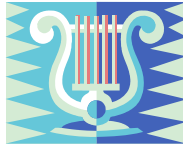
Teachers interested in the Complete Works Official List must look at the 2008 list which is also on the **SCJBF** website.

Please mail the following items to **Itoe Honda Akimoto** or bring them to the **January Branch Meeting**.

- 1) One self-addressed, stamped envelope.
- 2) A check made payable to **MTAC, Orange Coast Cities Branch: \$25** x the number of students entered + **postage**:

1-2 entries	\$1.00	5-6 entries	\$1.75
3-4 entries	\$1.50	7-8 entries	\$2.00
- 3) **DO NOT RETURN HARD COPIES OF THE 2008 APPLICATION.**  
These must be submitted online!

**Absolutely no changes or additions will be made after the **January 25<sup>th</sup>** deadline!**



## **CERTIFICATE OF MERIT**



- ♣ **November 15 11:59 pm** (online **registration deadline**)
- ♣ **November 16** (**registration packet/fees deadline: to Judy**)
- ♣ **January 28 11:59 pm** (online **evaluation form deadline**)

*- Message from Judy Jenkins -*

There's still time—but not very much! Remember that the **deadline** to register your students is **November 15 at 11:59 p.m.!** This is for both Path A and Path B, all disciplines. Be sure to **click “submit”** before closing each student's file. Now is the time not only to register but to print your student list **twice**. One copy will be sent to me and one copy is for you to keep and check all the details of student names, grades, and levels. Please enter the names with normal capitalization, such as **Suzy Superkid**, not SUZY SUPERKID or suzy superkid. No italics or bold fonts either. Be sure to check the appropriate box for Senior Award if the student is eligible.

### **Remember that you must send me:**

- **Your check** (\$\$ amount is on the student fees list: **One check-payable to MTAC Orange Coast Cities Branch**)
- **A copy of the student list and student fees list** (print from registration site)
- **A self-addressed stamped large envelope**
- **Your work assignment request** - - *This item was the last page of the “Certificate of Merit: Autumn Information” packet that was available at the last two branch meetings; that packet is now available on my front porch.) You can also drop your registration on the same porch! (There's a box: address shown below.)*

**I must have these items by **November 16** or your registration will not be valid!**

And once this is completed, start collecting the information you'll need for each student's repertoire. The database will be open to add that info in January. I can hardly wait!

**Judy Jenkins: CM Chair**

(859-8849) [jenkinsmusic@cox.net](mailto:jenkinsmusic@cox.net)

26762 Merino Cir. Mission Viejo, CA 92691-5434

♪ **Evaluation Forms** can be entered on line **between Jan. 1 and Jan. 28, 2008** and cannot be accepted after that date. **NO exceptions.**

♪ **Revised Syllabus, Technique Guidelines:** Call MTAC State Office **(800) 834-3340** to order.



## **BRANCH MEETINGS**

♠ **Wednesday, November 14, 10AM**  
**(Laguna Hills Community Center)**

**Piano Duets:** M'lou Dietzer, founder of our branch and of Orange Coast Cities North, and **Pennie Foster**, a member of our branch will share their thoughts on the rewards of teaching and playing duets. They will perform a few of their 2007 recital selections with the highlight being the performance of our own **Nancy Lau's** recently published intermediate duet book "*Gems for Two*". **Susan Zevnik**, co-owner of **Da Capo music**, will join us bringing the duet books she has found to be the most popular. So...bring your favorite duet book to share on a display table, and we'll see you there.

♠ **No Branch Meeting in December**

♠ **Wednesday, January 9, 2008, 10AM**  
**(Laguna Hills Community Center)**

**The Ears Have It:** On teaching ear training- with a guest speaker, **E.L. Lancaster**

## **ANNOUNCEMENTS**

### **Student News**

From the piano studio of **Pamela Worcester**

### ***Congratulations!***

To **Tiffany Lu** (age 9) for winning a Gold Medal (1st Place) at the **2007 Southern California Junior Bach Festival**, Complete Works Audition. Tiffany recently received a prestigious **Young Musicians Foundation Scholarship** (Abell Memorial Piano Scholarship) and performed at the **Beijing International Music Festival**.

### **Southwestern Youth Music Festival:**

2nd Place – Open Solo: **Tiffanie Yu**

1st Place – Qualified Solo: **Tiffany Lu** and **Colson Barkley**

2nd Place – Qualified Baroque: **Tiffany Lu**

2nd Place – Qualified Solo: **Sanae Ogura**

3rd Place – Qualified Solo: **Christopher Lee** and **Camden Barkley**

4th Place – Qualified Solo: **Tiffany Wang** and **Katherine Li**

### **◆Missed October Branch Meeting?**

If you have questions on the demonstration held at the meeting on **Keyboard Technique DVD** by **Linda Rohmund**, contact Linda at: Phone (760) 944-3773  
[lindarohmund@cox.net](mailto:lindarohmund@cox.net)

## **EVENTS/CONCERTS**

### **♣Pacific Symphony Events**

<http://pacificsymphony.entericorp.com/>

### **♣Philharmonic Society Events**

<http://www.philharmonicsociety.org>

### **♣Saddleback College Events**

[http://www.saddleback.edu/ap/fa/PDF/PerfArtsBrochureF07\\_001.pdf](http://www.saddleback.edu/ap/fa/PDF/PerfArtsBrochureF07_001.pdf)

### **♣Irvine Valley College Events**

<http://www.ivc.edu/arts/pages/default.aspx>

### **♣UC Irvine Events**

[http://www.arts.uci.edu/events\\_listview.php](http://www.arts.uci.edu/events_listview.php)

### **♣CSU Fullerton Events**

<http://www.fullerton.edu/arts/events/index.htm>

### **♣Fullerton College**

## **13<sup>th</sup> Annual Piano Ensemble Festival**

**The Thirteenth Annual Piano Ensemble Festival** will be held on **January 26th, 2008** at **Fullerton College**. This Festival includes auditions and a concert by the winners in the evening. The ensemble festival provides a great performance opportunity for pianists ranging from Early Intermediate to Teacher categories. *(Continue to p. 10)*

(Continued from p. 9)

For the first time, a collegiate category has been added this year.

Early Intermediate to Advanced level students are required to play two original pieces as duets, and one from a required list.

College Students and Teachers may present one or more original piece.

**The application forms** must be **postmarked by December 3, 2007.**

To receive a brochure or for any questions, please contact **Dr. Monica Lee at Fullerton College** 714-992-7719 or [mlee@fullcoll.edu](mailto:mlee@fullcoll.edu)



**MTAC & OCC Branch Events**  
in  
**Jan. & Feb. 2008**  
&  
**Deadlines (DL)**

- Jan. 9 **Branch Meeting**
- Jan. 20 **Showcase Recital - DL Jan. 5**
- Jan. 28 **CM online Evaluation Form DL**
- Feb. 2 **Baroque Festival - DL online Jan. 9**
- Feb. 15 **Composers Today's deadline**  
**Y.C. Guild's deadline**
- Feb. 16 **VOCE Recital- DL Jan. 9**
- Feb. 13 **Branch Meeting**
- Feb. 17 **Adult Student Workshop**
- Feb. 23 **Bach Festival - DL online Jan. 25**
- Feb. 23 & 24/Mar. 1 & 2  
**CM Panel Regional Audition**
- Feb. 24 **Community Recital - DL Feb. 9**

## ADVERTISEMENTS

### **♠♠ Pianos for Sale ♠♠**

*Best prices on Pre-owned Yamaha, Kawai and Steinway Pianos with great teacher discounts.*

### **Accent Piano Service** **Larry Pisano RPT**

*November Special!*

*One month FREE on all piano rentals*

Buy-Rent-Sell

Check out our new piano inventory

🎵 949-922-2440

🎵 [www.accentpiano.com](http://www.accentpiano.com)



### **♣♣ CASPER PIANO SERVICE ♣♣**

🎵 If any of your students are considering purchasing a piano this fall, please have them call me or their regular technician for help. And, please tell them not to wait too long before the holidays to schedule a tuning. 🎵

**Bob Casper** 🎵949-448-0353

🎵 [bcasper@cox.net](mailto:bcasper@cox.net)

